

**Petworth House** shaped Petworth town, which crowds against its high walls, and the labour of the townspeople kept the house and estate working for centuries. The legacy of the town's service is all around. For many centuries virtually everyone in Petworth depended on the Petworth House estate – known as the Leconfield Estate – for their livelihood. Many lived either in estate cottages in town or in the Servants' Quarters, where you can see the 19th-century state-of-the-art kitchens at Petworth House.

Let Mrs Cownley, Housekeeper at Petworth House for 25 years until 1933, help you discover the connections and contrasts between the great house and the town. She will lead you past the antique shops in cobbled Lombard Street, to visit the Petworth Cottage Museum. You will find some of the finest estate cottages and follow the Round-the-Hills path for some unusual views over the working estate today.

**KEY**

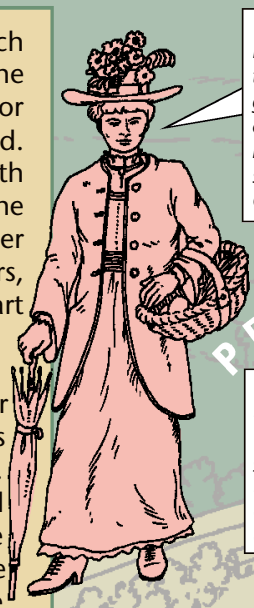
- 1 Church Lodge, Petworth House
- 2 The Obelisk
- 3 Lombard Street
- 4 Leconfield Hall
- 5 Golden Square
- 6 Petworth Cottage Museum
- 7 Site of Petworth House of Correction
- 8 Estate cottages
- 9 Roman Catholic Church
- 10 Round-the-Hills
- 11 Bartons Lane Cemetery
- 12 Somerset Hospital
- 13 St Mary's Church

- Town trail
- Extended walks
- Tourist Information
- Toilets
- Parking

Find out more overleaf

**Petworth**  
HOUSE & TOWN

The Petworth Housekeeper's Tour



"It was quite a job being Housekeeper – I had to see that all the china and linen was kept in good order, I supervised the spring cleaning, I managed all the laundry - maids and housemaids. You can still see my room in the Servants' Quarters at Petworth House."

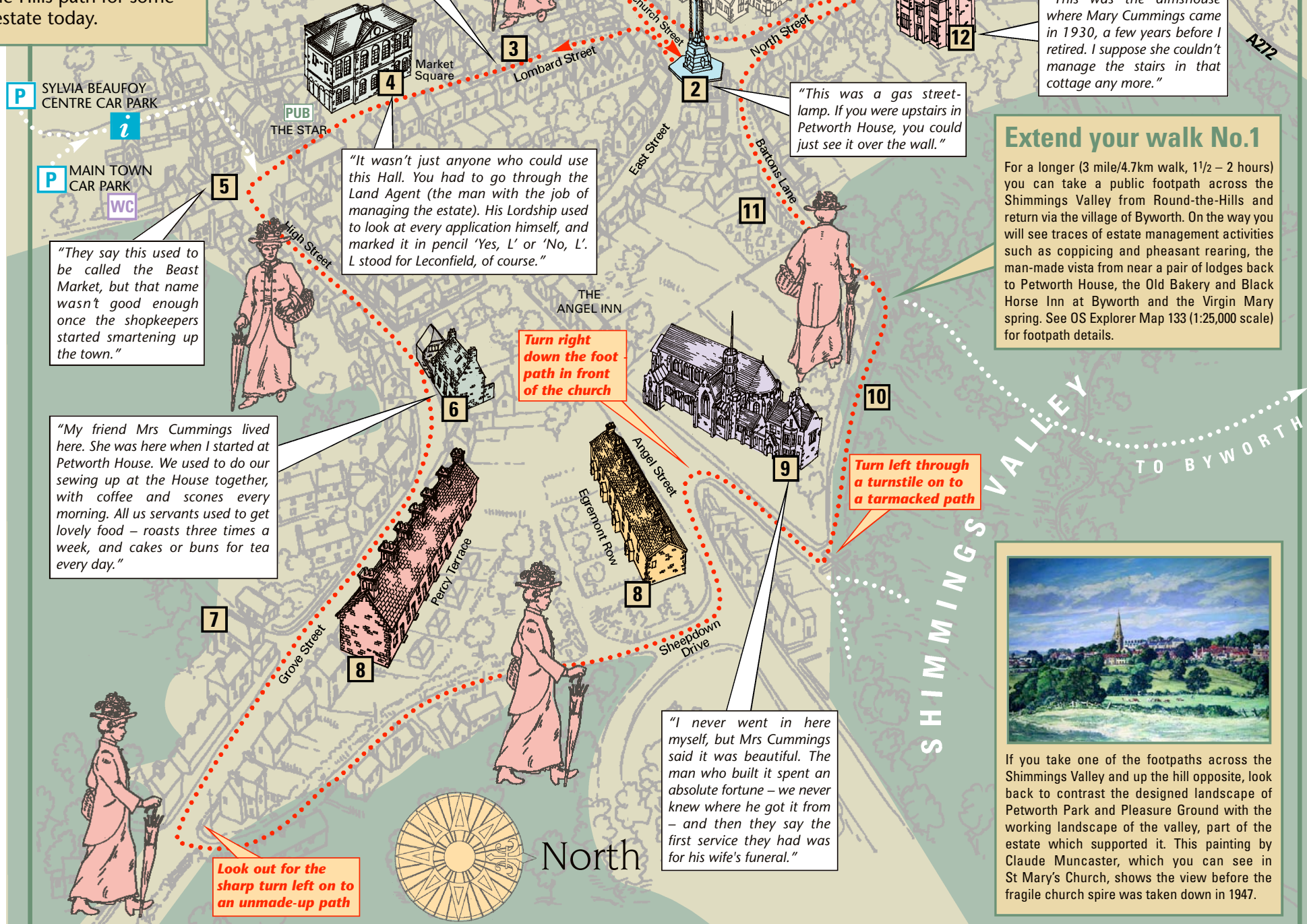
"This is where you went out into town – and you had to get back by 10pm on your day off or you'd be locked out. Would you believe it, I had to tell one of the housemaids off once? She was actually eating a cream tea in a tea shop over the road, the Four and Twenty Blackbirds, in full view of everybody."

"There used to be a butcher's shop here. We used to order our groceries in from local shops like these and pay for them on account."

**Extend your walk No.2**  
For a chance to glimpse the outside of Petworth House and go into the Park even when the House is closed, cross North Street into the area of estate outbuildings signed as the Cowyard. The route goes through this yard, and turns left through a tunnel to reach the park gates. Open all year 8am to dusk, free of charge. Return the same way. The Cowyard used to house the prize-winning cattle that were a feature of Petworth Park.

**IF YOU HAVE PARKED AT THE NATIONAL TRUST CAR PARK, PLEASE MAKE SURE YOU GET BACK TO CHURCH LODGE BY 5PM AS THE STAFF STILL NEED TO LOCK UP!**

**Extend your walk No.1**  
For a longer (3 mile/4.7km walk, 1½ – 2 hours) you can take a public footpath across the Shimmings Valley from Round-the-Hills and return via the village of Byworth. On the way you will see traces of estate management activities such as coppicing and pheasant rearing, the man-made vista from near a pair of lodges back to Petworth House, the Old Bakery and Black Horse Inn at Byworth and the Virgin Mary spring. See OS Explorer Map 133 (1:25,000 scale) for footpath details.



**Questionnaire**

**PETWORTH**

Hello  
This leaflet is part of a pilot project to develop trails at heritage sites, trails that encourage people to visit the surrounding area, as well as the heritage site itself. To be able to produce similar trails elsewhere, we need to know what you think of this one. Please could you complete the questionnaire, and then tear it off and simply put it in the post. Please return it to us by 30th September 2007.

Thank you very much for your feedback

- 1 Are you a National Trust member?**  
Yes  No
- 2 Have you visited Petworth House before?**  
Yes  No
- 3 Where did you see this Trail promoted?**  
 Petworth House Car Park Reception   
 Petworth House Church Lodge   
 National Trust newsletter   
 Petworth Cottage Museum   
 Tourist Information Centre   
 On the internet
- 4 Did you follow any of the Trail?**  
 All of it   
 Part of it   
 None of it
- 5 Did the Trail encourage you to visit more of the area around Petworth House than you had originally planned?**  
 Yes  No
- 6 Did the Trail give you a glimpse of how the history of the house and town are closely linked?**  
 Yes definitely  A little  No
- 7 If you visited Petworth House or Park, does this Trail encourage you to make another visit to them in the future?**  
 Very likely to come back   
 Might come back   
 Not going to come back   
 Don't know if I'll come back   
 Didn't visit Petworth House or Park
- 8 Does this Trail encourage you to make another visit to the town?**  
 Very likely to come back   
 Might come back   
 Not going to come back   
 Don't know if I'll come back
- 9 Next time you visit a heritage site, would you take the time to visit nearby places of interest, if a similar Trail to this was available?**  
 Yes definitely   
 Maybe   
 No
- 10 Did you spend any money in Petworth House tea-room or shop?**  
 None   
 Less than £3   
 Between £3 and £5   
 More than £5
- 11 Did you spend any money in Petworth town, outside of Petworth House?**  
 None   
 Less than £3   
 Between £3 and £5   
 More than £5

CUT ALONG DOTTED LINE

**THANK YOU FOR YOUR TIME.**



# Petworth West Sussex

CUT ALONG DOTTED LINE

Tourism South East  
40 Chamberlayne Road  
Eastleigh  
Hampshire  
SO50 5BY

Business Reply Service  
License number  
S01465



## Find out more

### 1 Church Lodge

This is the entrance to Petworth House Servants' Quarters and Petworth House (admission charge); free access to the National Trust shop and restaurant when the House is open.



Church Lodge was the usual way into Petworth House for the servants. Even on days off they had to be back here by 10pm, when the housekeeper locked up. Servants were treated with a mixture of benevolence and control. While their food and accommodation were good by the standards of the time, and loyal employees were looked after into old age, their behaviour was tightly controlled.

### 2 The Obelisk

In 1851 Petworth town gave this ornate streetlamp as a token of thanks to Lord Leconfield for providing the town with gas lighting. It was designed by Sir Charles Barry, co-architect of the Houses of Parliament.



### 3 Lombard Street

Picturesquely cobbled Lombard Street is the centre of the Petworth antiques trade. It was once a busy mixed shopping street – a bull's head on blue and white tiles on one of the house fronts on the right shows where there used to be a butcher's shop.



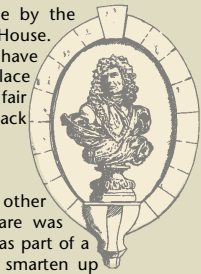
### 4 Leconfield Hall

Built in 1794 as a Courthouse and Council meeting place, this is now the main public hall, right in the centre of Market Square. The bells on the roof served as the town fire alarm until the 1920s, and the bust of William III is a replica of one by Dutch sculptor Honore Pelle which you can now see by the Grand Staircase in Petworth House. The square itself is known to have been the Petworth market place since 1541. It hosts an annual fair in November which dates back at least to 1189.



### 5 Golden Square

Along with a number of other Petworth streets, Golden Square was re-named in the 19th century as part of a 'gentrification' programme to smarten up the town.



### 6 Petworth Cottage Museum

The museum re-creates a typical Leconfield Estate cottage in about 1910. Mrs Mary Cummings, a seamstress at Petworth House, lived here from 1901 to 1930. She seems to have been on good terms with Mrs Cownley, working from 10am to 4pm with coffee and scones on arrival, a mid-day meal and tea in the afternoon.



It's interesting to contrast the cosy but cramped cottage with the scale of Petworth House's Servants' Quarters. A junior kitchen maid engaged in 1937 commented that the Petworth House kitchen was much bigger than the whole ground floor of the house she had been brought up in.

### 7 Site of Petworth House of Correction

The notorious Petworth House of Correction was built in the late 18th century to deliver 'short sharp shocks' of hard labour and solitary confinement to petty criminals. Look in the wall of the car parking bay next to the Court House where you can see re-used bricks inscribed with

the names of prisoners. From 1826 conditions for the inmates became even harsher under Prison Governor John Mance, who once proudly stated "I now have a notorious vagrant in my custody who declared to me... that he would rather go three months in Lewes than one in this house, and he assures me to my great satisfaction that he will never come into this division of the county again".



### 8 Estate cottages

Some 400 cottages were constructed for Leconfield Estate workers during the mid-19th century. Percy Terrace and Egremont Row are striking examples. They are well-built with attractive brick detailing and long gardens in which tenants could grow their own fruit and vegetables. Like all the estate cottages, the front doors are painted in the estate colour, a light brown shade, and they are numbered according to when they first appeared on the rent records, not according to what street they are in. Once you know, it's obvious which houses in Petworth still belong to the estate.



### 9 Roman Catholic Church

As one of the few Roman Catholics in Petworth, Mrs Cummings worshipped here in what would have been a splendid new church. It was built in the 1890s by a wealthy benefactor, Charles Willcock Dawes, with no expenses spared, but it had only a tiny congregation until Catholic Canadian soldiers and Polish refugees moved into the Petworth area during and after the Second World War.



### 10 Round-the-Hills

Take the lane downhill in front of the Roman Catholic Church. This leads to a junction of paths by a lamp-post: turn left along the level, tarmacked path called Round-the-Hills. This level paved path has splendid views across the Shimmings Valley, part of the Leconfield Estate. The old road to London ran across the valley, and in winter polo ponies graze on the slopes. The woods are still used for pheasant-rearing and coppicing. The tenant farmers used to pay their rents in the Audit Room, which is now the National Trust restaurant in Church Lodge.



### 11 Bartons Lane Cemetery

This burial ground contains, among others, the graves of generations of the Egremont family.



### 12 Somerset Hospital

This building was one of several almshouses that were provided by the Leconfield Estate for its elderly tenants. Mrs Cummings moved here from her cottage in 1930 and died, aged 80, in 1935.



### 13 St Mary's Church

The oldest parts of the church are 13th century, but it was much altered in Victorian times. Look for the marble statue of George O'Brien Wyndham, 3rd Earl of Egremont, the great patron of British artists who brought JMW Turner to Petworth in the 1820s, and the painting of the view of Petworth from the Goanah (or 'Gog and Magog') lodges across the Shimmings Valley.

## Attractions

### Petworth House

Petworth GU28 0AE  
01798 342207 (general); 01798 343929 (infoline)  
[www.nationaltrust.org.uk/petworth](http://www.nationaltrust.org.uk/petworth)



**Petworth House**, rebuilt in 1688 around the ancient manor of the Percy Family, stands in a 700-acre deer park landscaped by 'Capability Brown' and has the largest herd of fallow deer in England. Brown's creation is a naturalistic landscape, with a great sweep of turf dotted by clumps of trees and interrupted by a lake, with the South Downs as a distant backdrop.

Petworth House contains the finest collection of paintings and sculpture in the care of the National Trust, with paintings by artists such as Van Dyck, Turner, Reynolds, Blake and Titian, as well as sculpture. The great Grinling Gibbons and the Petworth carpenter John Selden decorated the Carved Room around 1692 with extraordinarily skilful limewood carvings depicting festoons of flowers, cherubs, birds and musical instruments in three dimensions, while the Servants' Quarters and Old Kitchens give a superb insight into the life 'below stairs' for the domestic staff. All areas of Petworth House are accessible to wheelchairs except the bedrooms (open Tue and Wed afternoons) and Chapel.

There is free public access to Petworth Park all year (8–dusk) from Petworth town through the Cowyard tunnel (off North Street). Cyclists are welcome; dogs must be kept under close control. You can also visit the Audit Room restaurant and National Trust shop free from Petworth town through Church Lodge during Petworth House opening times and in the pre-Christmas period.

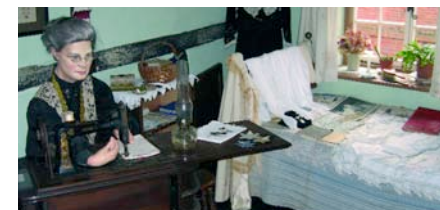
Petworth House and Servants' Quarters:  
open mid March–31 Oct, Sat–Wed, 11–5.  
The Pleasure Ground stays open one hour later.

Admission to House, Pleasure Ground and Servants' Quarters: Gift Aid £9, child £4.50, family £22.50; standard £8.10, child £4, family £20.40; groups £7.

Pleasure Ground and Servants' Quarters only: Gift Aid £3.50, child £1.80; standard £3.10, child £1.60.  
The Gift Aid Admission includes a 10% voluntary donation which enables the National Trust to reclaim tax on the whole amount paid (an extra 28%).

### Petworth Cottage Museum

Petworth Cottage Museum  
346 High Street  
Petworth GU28 0AU  
01798 342100  
[www.petworthcottageuseum.co.uk](http://www.petworthcottageuseum.co.uk)



The **Petworth Cottage Museum** is a typical example of the kind of housing Lord Leconfield provided for his workers. Mrs Mary Cummings, a seamstress at Petworth House, lived here from 1901 until 1930 and the cottage has been restored as it would have been around 1910, complete with stone sink, working gas lamps, rag rugs and cottage garden.

Open April–Oct, Wed–Sun and BH Mon 2–4.30.  
Admission £2.50, children (under 14) 50p.

## Local businesses

### SHOPPING

Petworth has over thirty art and antique shops and a number of enticing boutiques, clustered around the compact town centre.

**Boutiques and gift shops in Petworth**  
[www.petworthtown.co.uk/traders.htm](http://www.petworthtown.co.uk/traders.htm)

**Art and antique shops/dealers in Petworth**  
[www.paada.com](http://www.paada.com)

### EATING AND DRINKING

**Angel Inn** (hotel and restaurant)  
Angel Street  
Petworth GU28 0BG  
01798 342153  
[www.sussexaverns.co.uk](http://www.sussexaverns.co.uk)

**The Audit Room** (National Trust licensed restaurant)

Church Lodge  
Petworth House  
Petworth GU28 0AE  
01798 344975  
Open during Petworth House opening hours and pre-Christmas (details 01798 342207).

**Bay Tree Bakery** (bakery and coffee shop)

Golden Square  
Petworth GU28 0AP  
01798 342260

**Black Horse** (public house on the optional longer trail)

Byworth  
Petworth GU28 0HL  
01798 342424

**Cates Delicatessen**

Golden Square  
Petworth  
01798 343634  
[www.catesdelicatessen.com](http://www.catesdelicatessen.com)

**Lombards** (café-restaurant)

Lombard Street  
Petworth GU8 0AG  
01798 344264

**Saddlers** (tea shop, restaurant and bar)

Saddler's Row  
Petworth  
01798 342125  
[www.saddlers.biz](http://www.saddlers.biz)

**The Star** (public house)

Market Square  
Petworth GU28 0AH  
01798 342813

**Stonemasons Inn** (public house/accommodation)

North Street  
Petworth GU28 9NL  
01798 342510  
[www.thestonemasonsinn.co.uk](http://www.thestonemasonsinn.co.uk)  
Near the entrance to Petworth House National Trust car park.

**Tiffins of Petworth** (tea shop)

1 Leppards, High Street  
Petworth GU28 0AU  
01798 344560  
[www.tiffinsofpetworth.co.uk](http://www.tiffinsofpetworth.co.uk)

### GENERAL VISITOR INFORMATION

**Petworth Tourist Information Centre**  
The Old Bakery  
Golden Square  
Petworth GU28 0AF  
01798 343523

[www.petworthpages.co.uk](http://www.petworthpages.co.uk)

[www.ruralways.org.uk](http://www.ruralways.org.uk)

[www.visitthecityofpetworth.com](http://www.visitthecityofpetworth.com)

[www.visitsoutheastengland.com](http://www.visitsoutheastengland.com)

### LOCAL TRANSPORT

**Traveline** (for general public transport enquiries)  
0870 608 2 608, [www.traveline.org.uk](http://www.traveline.org.uk)

BUSES:

**Compass Travel**  
01903 690025  
[www.compass-travel.co.uk](http://www.compass-travel.co.uk)

**Stagecoach in the South Downs**

0845 121 0170  
[www.stagecoachbus.com](http://www.stagecoachbus.com)

TAXIS:

**Petworth Private Hire**  
01798 342691/mobile 07971 082333

This trail was produced as part of a SEEDA/Tourism South East initiative with the support of the National Trust, English Heritage and the Historic Houses Association.  
It was produced by Acorn Consulting and written by Andy Gannon, Peter Jernome MBE of the Petworth Society and Terry Shailer, Matthew Spriggs and Richard Chandler of the Petworth Partnership for their help in creating this trail. Photos: Andy Gannon and Tim Locke  
We would like to thank the National Trust, Peter Jernome MBE of the Petworth Society, and Terry Shailer, Matthew Spriggs and Richard Chandler for their help in creating this trail. The views expressed in this trail are not necessarily those of the organisers. However, the publisher cannot be held responsible for any errors or omissions of any kind in the trail or the consequences of any changes in the details of the trail. However, as a reader of any kind, you should ensure that this trail is safe and accurate before you use it. The publisher accepts no responsibility for any injuries caused to readers whilst following the trail.



## HOUSE & TOWN

THE  
PETWORTH HOUSEKEEPER'S TOUR

Let Mrs Cownley, Housekeeper at Petworth House for 25 years, help you discover the connections and contrasts between the great house and the town



This trail takes you between Petworth House, the town centre shops and the Petworth Cottage Museum, includes views across the Shimmings Valley and optional walking extensions to Petworth Park and Byworth  
THE FULL CIRCUIT IS 1 MILE/1.6KM (45-60 MINUTES)  
Start from the Petworth House National Trust car park or join the trail from the town centre